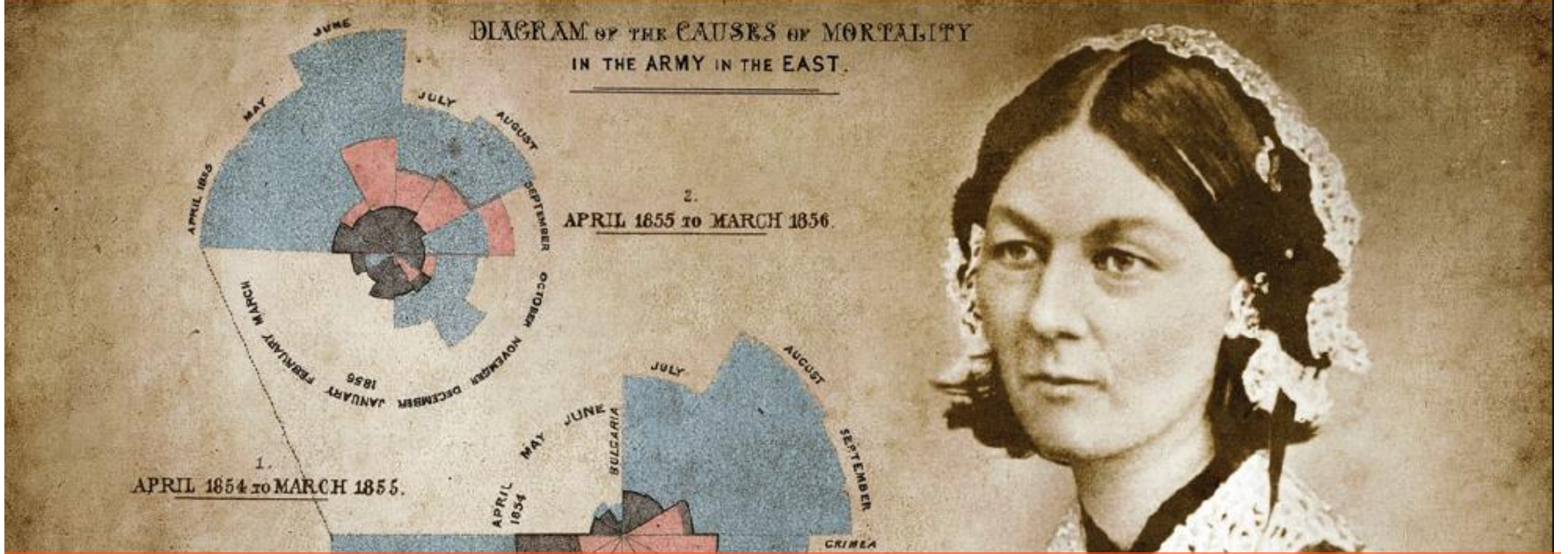


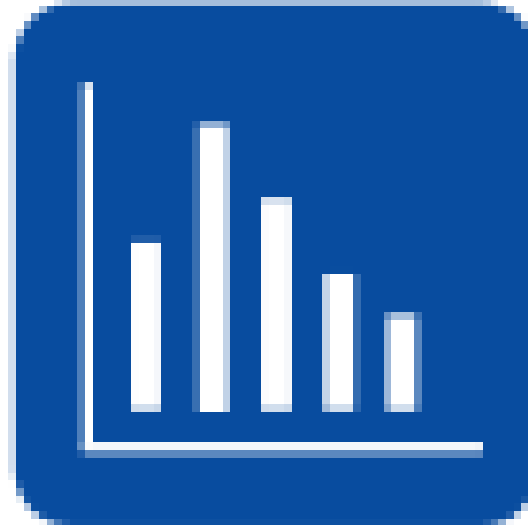
III. SAĞLIK BAKIMIYLA İLİŞKİLİ İNFEKSİYONLAR SİMPOZYUMU

7 - 9 MART 2014, ASKERİ MÜZE VE KÜLTÜR SİTESİ, HARBİYE - İSTANBUL



İnfeksiyon Kontrol Hemşirelerine
Teşekkürlerimizi Sunarız

KLİMİK Yönetim Kurulu



www.klimik.org.tr

www.facebook.com/pages/Klimik-Derneđi



TBÇG

KLİMİK DERNEĞİ
TÜBERKÜLOZ ÇALIŞMA GRUBU



ADÇG

KLİMİK DERNEĞİ ANTİBİYOTİK
DİRENCİ ÇALIŞMA GRUBU



İİÇG

KLİMİK DERNEĞİ ERİŞKİN
BAĞIŞIKLAMASI ÇALIŞMA GRUBU



VHÇG

KLİMİK DERNEĞİ VİRAL
HEPATİT ÇALIŞMA GRUBU



SBIÇG

KLİMİK DERNEĞİ SAĞLIK BAKIMIYLA
İLİŞKİLİ İNFEKSİYONLAR ÇALIŞMA GRUBU



HIVÇG

KLİMİK DERNEĞİ
HIV/AIDS ÇALIŞMA GRUBU



DAİÇG

KLİMİK DERNEĞİ DİYABETİK
AYAK İNFEKSİYONLARI ÇALIŞMA GRUBU



İİÇG

KLİMİK DERNEĞİ İNFEKSİYON
İMMUNOLOJİSİ ÇALIŞMA GRUBU



Florence Nightingale, 1820 - 1907

Kırım Savaşı: Tifüs ve Kolera



Gözlem: Fenerli Kadın

A



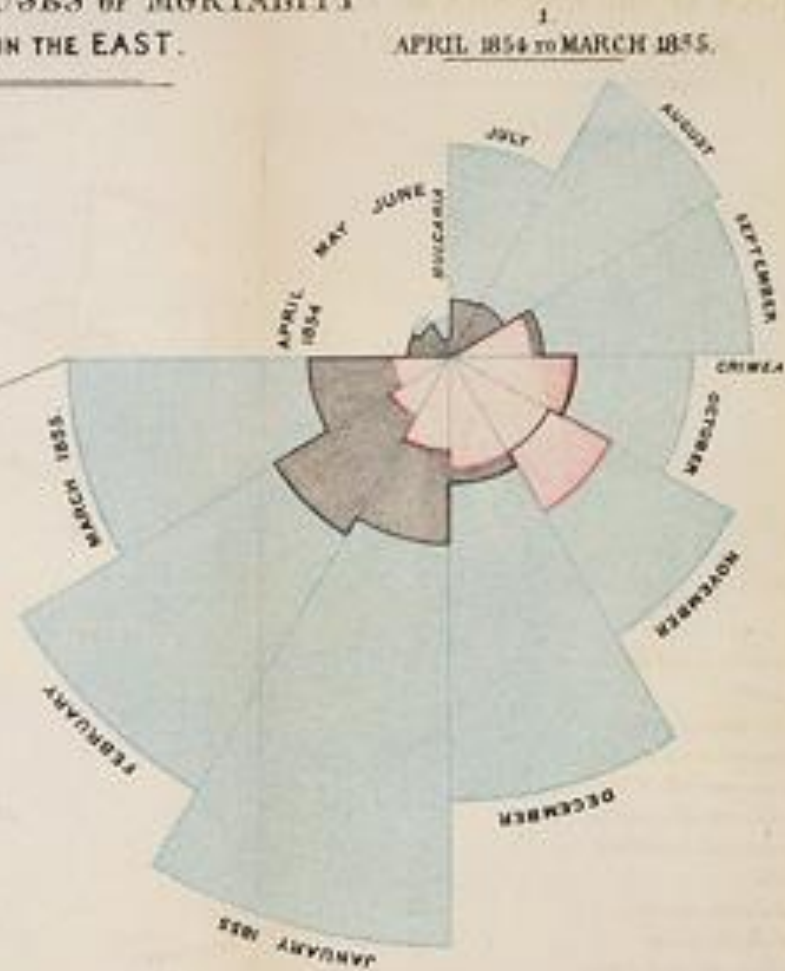
FLORENCE NIGHTINGALE IN THE MILITARY HOSPITAL AT SCUTARI.

B



Ölçme: İzlem Kartları

DIAGRAM OF THE CAUSES OF MORTALITY IN THE ARMY IN THE EAST.



The arms of the blue, red, & black wedges are each measured from the centre as the common vertex.

The blue wedges measured from the centre of the circle represent area for area the deaths from *Præsentable or Mitigable Zymotic diseases*, the red wedges measured from the centre the deaths from *wounds* & the black wedges measured from the centre the deaths from *all other causes*.

The black line across the red triangle in Nov^r 1854 marks the boundary of the deaths from all other causes during the month.

In October 1854, & April 1855 the black area coincides with the red, in January & February 1855 the blue coincides with the black.

The entire areas may be compared by following the blue, the red & the black lines enclosing them.

Yazma: Sağlık Üzerine Etkisi

HOSPITAL GENERAL STATISTICAL FORM.

This Sheet will serve for the Classification of Cases in Hospitals under the following headings:—"Remaining, 1st January"—
"Admitted"—"Cured (or Relieved)"—"Dead"—"Discharged incurable, for Irregularities, or at their own Request"—
"Remaining, 31st December"—"Duration of Cases in Days."

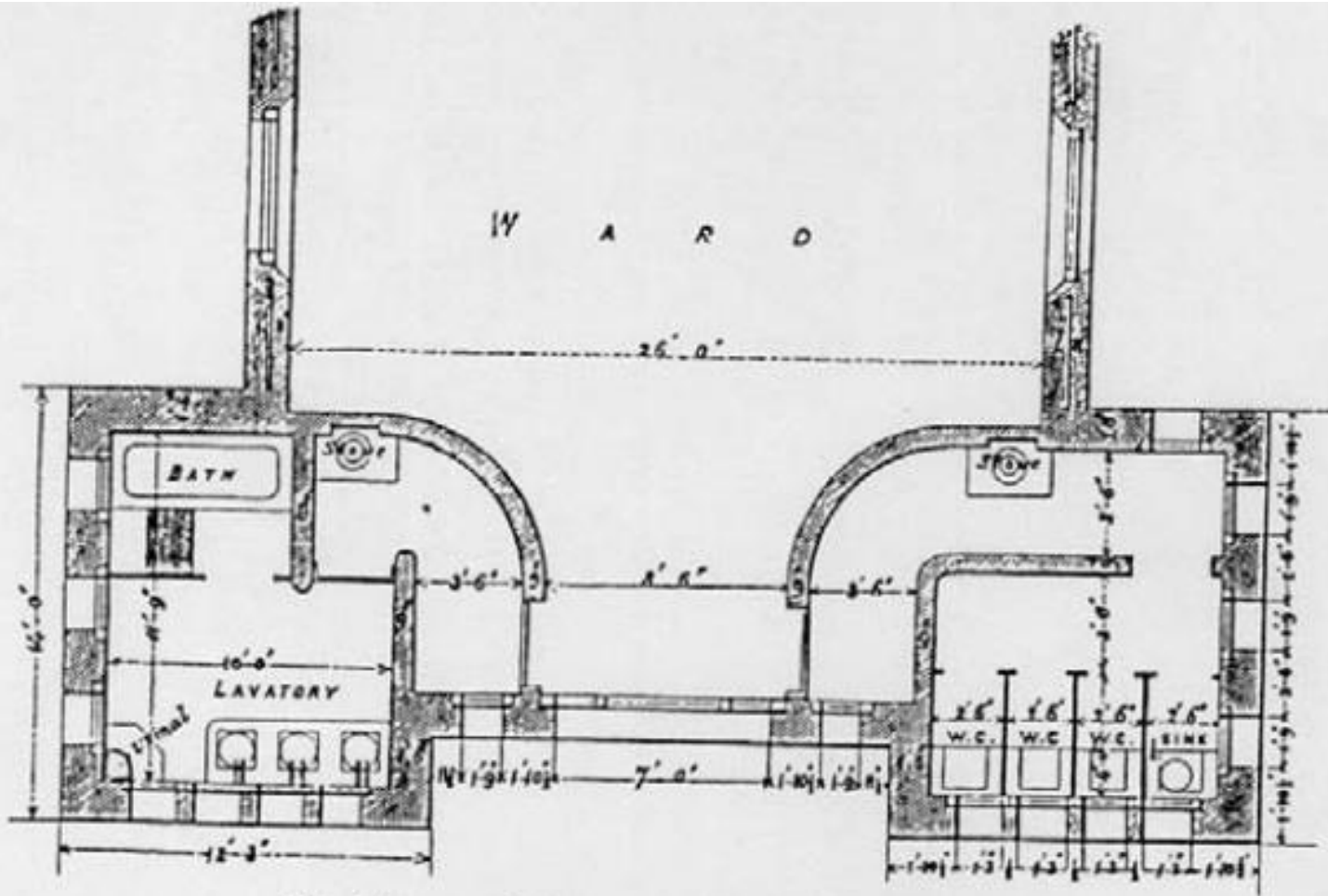
Write the Name of Hospital, the Sex, the required Heading, and Date, with the Pen.

| Age | Months | | | | | | | | | | | | | | | | | | | | | | | | |
|---|--------|---|---|---|---|---|----|----|----|----|----|----|----|----|----|----|----|----|----|----|----|----|----|----|-----|
| | 0 | 1 | 2 | 3 | 4 | 5 | 10 | 15 | 20 | 25 | 30 | 35 | 40 | 45 | 50 | 55 | 60 | 65 | 70 | 75 | 80 | 85 | 90 | 95 | 100 |
| CLASS I.—ORDER I. (ZYMOTIC DISEASES.) | | | | | | | | | | | | | | | | | | | | | | | | | |
| 1. Small Pox | | | | | | | | | | | | | | | | | | | | | | | | | |
| Measles | | | | | | | | | | | | | | | | | | | | | | | | | |
| Whooping Cough | | | | | | | | | | | | | | | | | | | | | | | | | |
| Croup | | | | | | | | | | | | | | | | | | | | | | | | | |
| Scarlatina | | | | | | | | | | | | | | | | | | | | | | | | | |
| Quincy | | | | | | | | | | | | | | | | | | | | | | | | | |
| Diphtheria | | | | | | | | | | | | | | | | | | | | | | | | | |
| Coryza, Catarrh, Influenza | | | | | | | | | | | | | | | | | | | | | | | | | |
| Ophthalmia (perniciosa) | | | | | | | | | | | | | | | | | | | | | | | | | |
| Erysipelas | | | | | | | | | | | | | | | | | | | | | | | | | |
| Eczema (perforated Fever) | | | | | | | | | | | | | | | | | | | | | | | | | |
| Pyæmia | | | | | | | | | | | | | | | | | | | | | | | | | |
| Hospital gangrene | | | | | | | | | | | | | | | | | | | | | | | | | |
| Carbuncle, Ulcer | | | | | | | | | | | | | | | | | | | | | | | | | |
| Dysentery | | | | | | | | | | | | | | | | | | | | | | | | | |
| Diarrhoea | | | | | | | | | | | | | | | | | | | | | | | | | |
| Cholera | | | | | | | | | | | | | | | | | | | | | | | | | |
| Typhoid Fever (typhoid) | | | | | | | | | | | | | | | | | | | | | | | | | |
| Typhus | | | | | | | | | | | | | | | | | | | | | | | | | |
| Relapsing Fever (typhoid) | | | | | | | | | | | | | | | | | | | | | | | | | |
| Ague | | | | | | | | | | | | | | | | | | | | | | | | | |
| Remittent Fever | | | | | | | | | | | | | | | | | | | | | | | | | |
| Intermittent | | | | | | | | | | | | | | | | | | | | | | | | | |
| OTHERS | | | | | | | | | | | | | | | | | | | | | | | | | |
| ORDER II. | | | | | | | | | | | | | | | | | | | | | | | | | |



The very first requirement in a hospital is that it should do the sick no harm

Small text at the bottom right of the page, including "ORDER III." and "ORDER IV." with associated medical terms like "rickets", "bronchitis", "catarrh", and "epidemic".



Plan of Lavatory, Baths, and Water-closets for Hospital Wards.

*"Hastaneler Üzerine Notlar", 1863
Selimiye Kışlası, Üsküdar, İstanbul*

1847



1863



1958



1970

1980

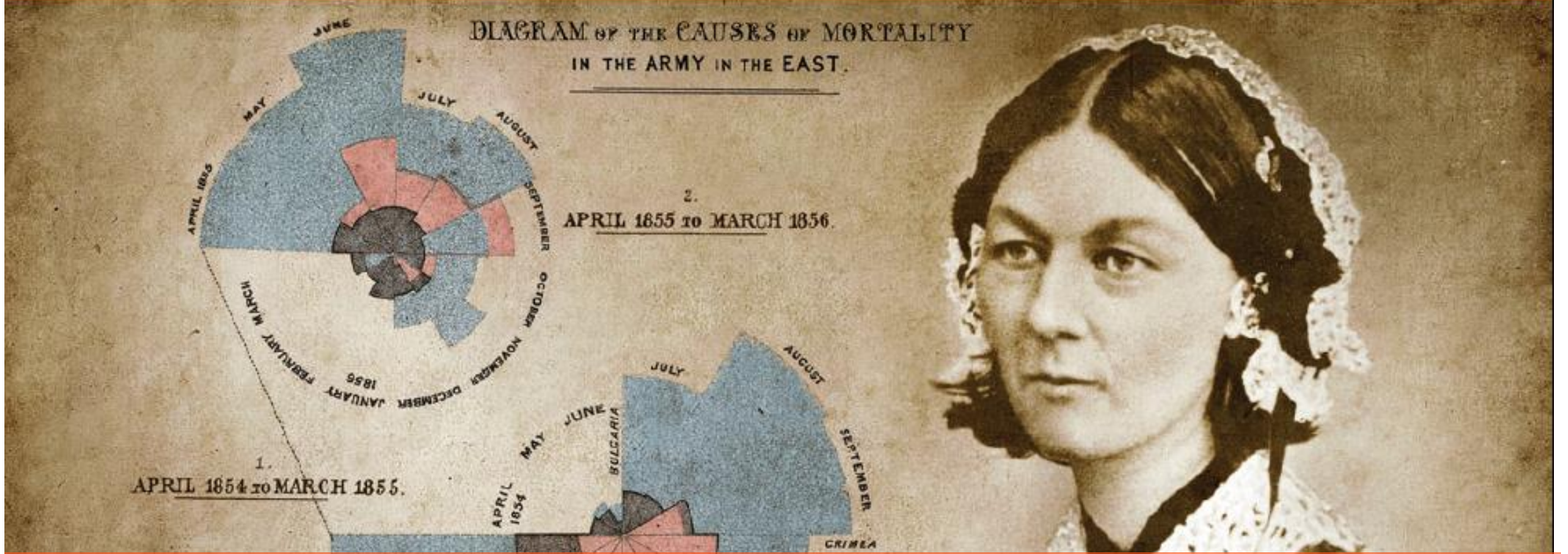
Hastane enfeksiyon kontrolünün tarihi



Gençliđi yetiřtiriniz. Onlara ilim ve irfanın (kültürün) müspet fikirlerini veriniz. İstikbalin aydınlığına onlarla kavuřacaksınız.

III. SAĞLIK BAKIMIYLA İLİŞKİLİ İNFEKSİYONLAR SİMPOZYUMU

7 - 9 MART 2014, ASKERİ MÜZE VE KÜLTÜR SİTESİ, HARBİYE - İSTANBUL



İnfeksiyon Kontrol Hemşirelerine
Teşekkürlerimizi Sunarız

KLİMİK Yönetim Kurulu